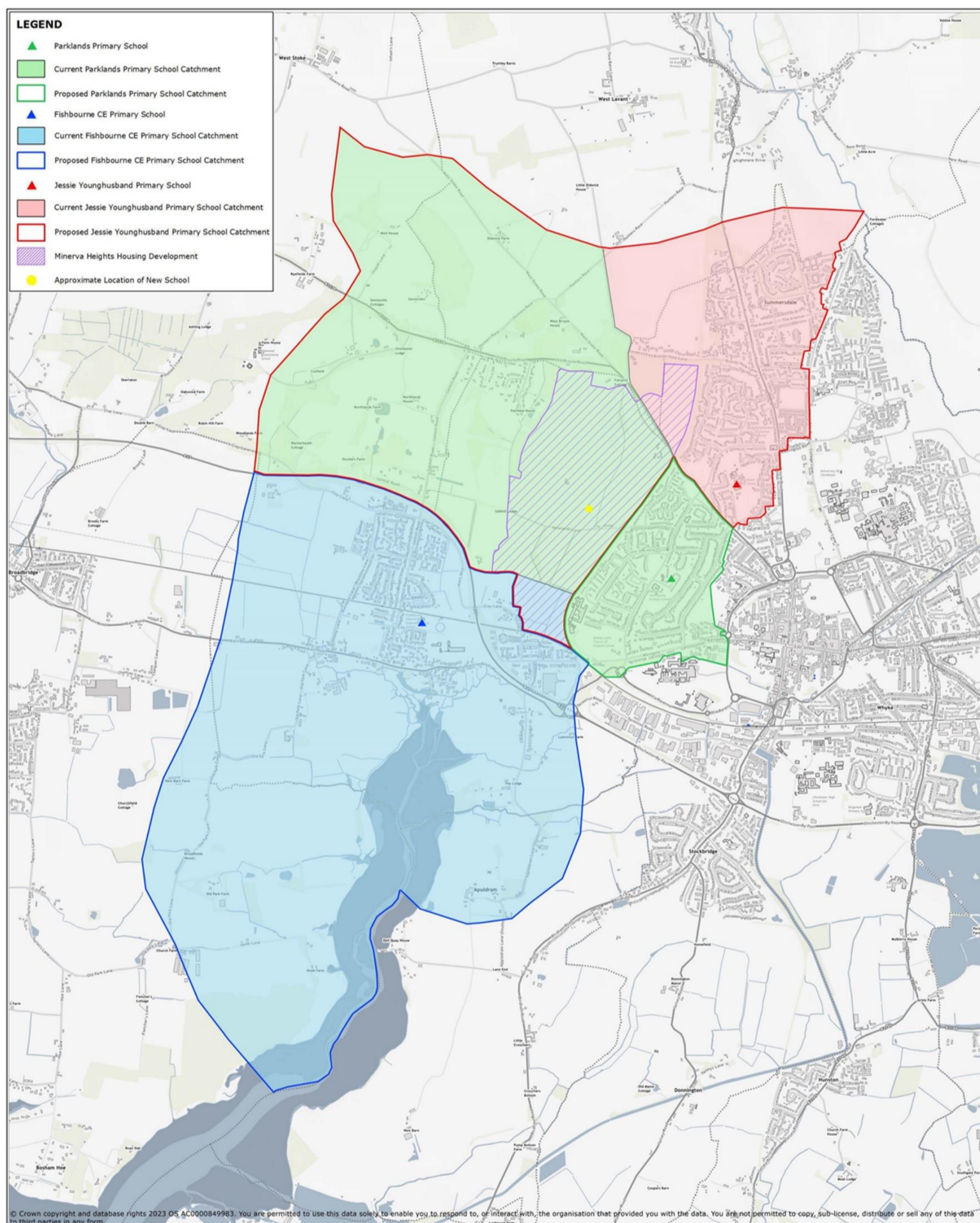


## Proposed Revisions to the catchment areas for schools closest to the Minerva Heights development.

Parklands Primary School - the catchment area is proposed to now finish along the boundary line of Centurion Way, bordering the Minerva heights development, the area to the right will remain unchanged, green boundary line on the map.

Jessie Younghusband Primary School is proposed to now include Minerva Heights (purple hatched area on the map) as well as the area to the left of the development, red outline boundary on the map.

Fishbourne Primary School is proposed to remain predominantly unchanged, with the top boundary now going around the Minerva Heights development blue outline boundary on the map.



### School Locations & Catchments in relation to 'Minerva Heights'

	Scale @ A1:	1:11000	Produced by Property Information Team	
	Plot Date:	03/11/2023	Property & Assets Directorate	